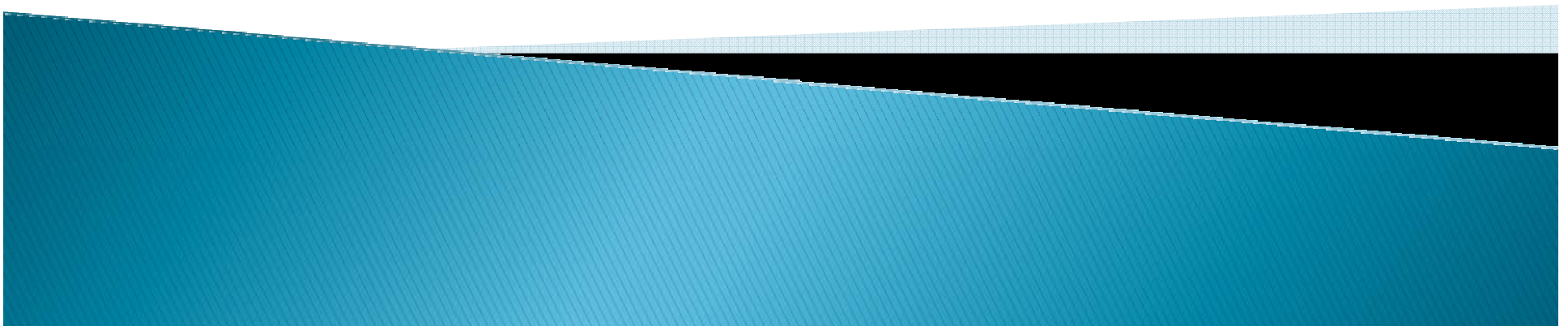


Capabilities-Based Planning Tools

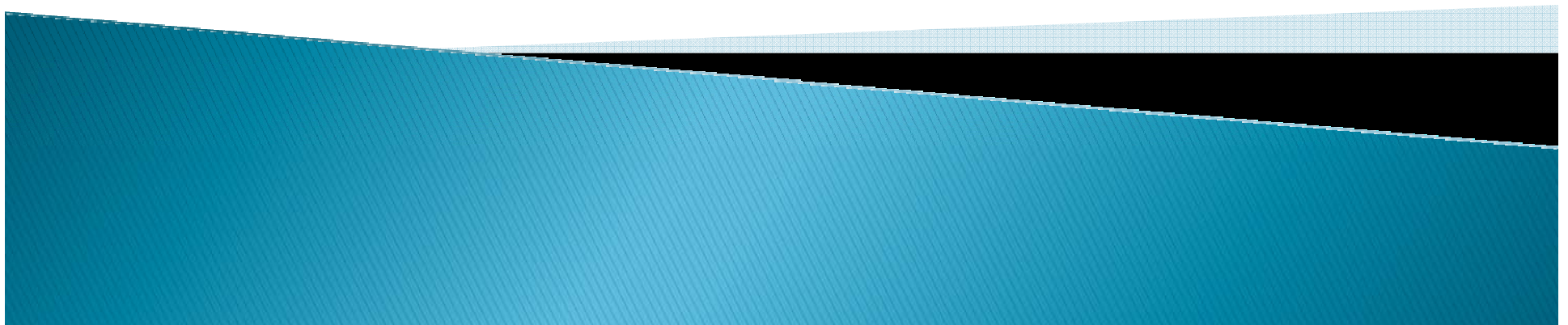
Mike Wagner
Planning Manager
Governor's Office of Homeland Security



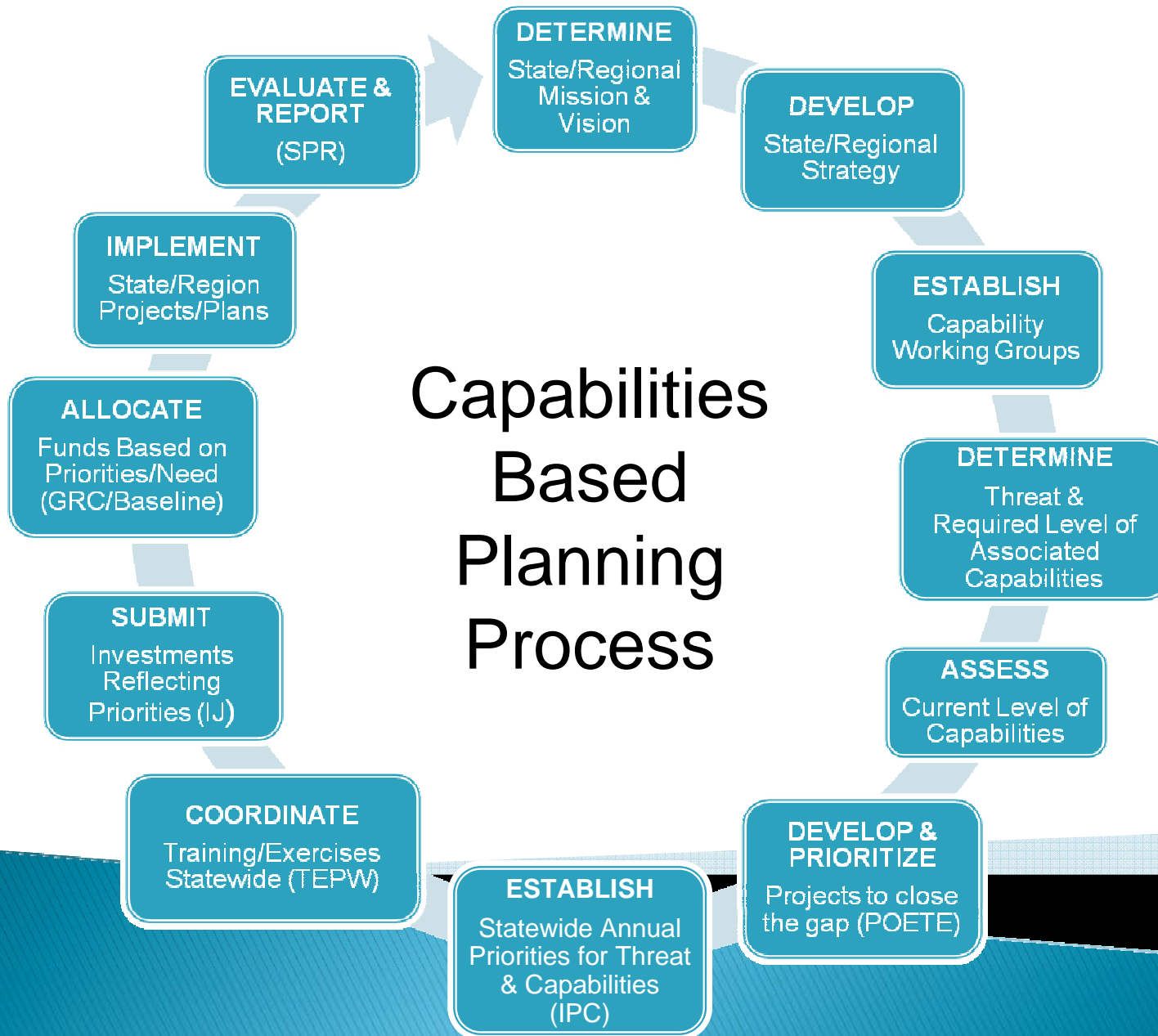
NWAHEMR Strategic Plan

▶ Common Themes

- Additional planning
- Prioritization of capabilities and gaps
- Organizational Structure
- Standardized assessment tools
- Streamlined and consistent grant application process



Capabilities Based Planning Process

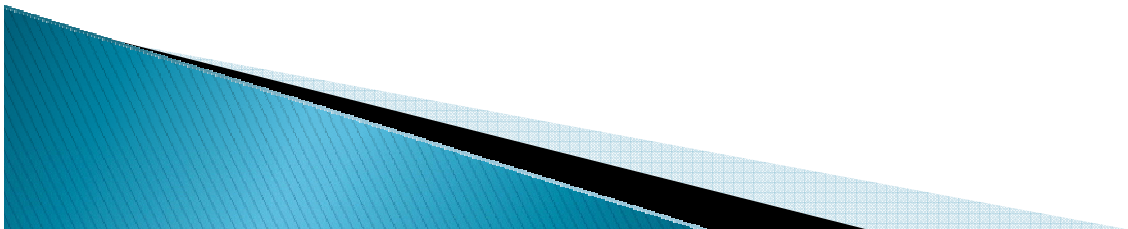


Where to start...

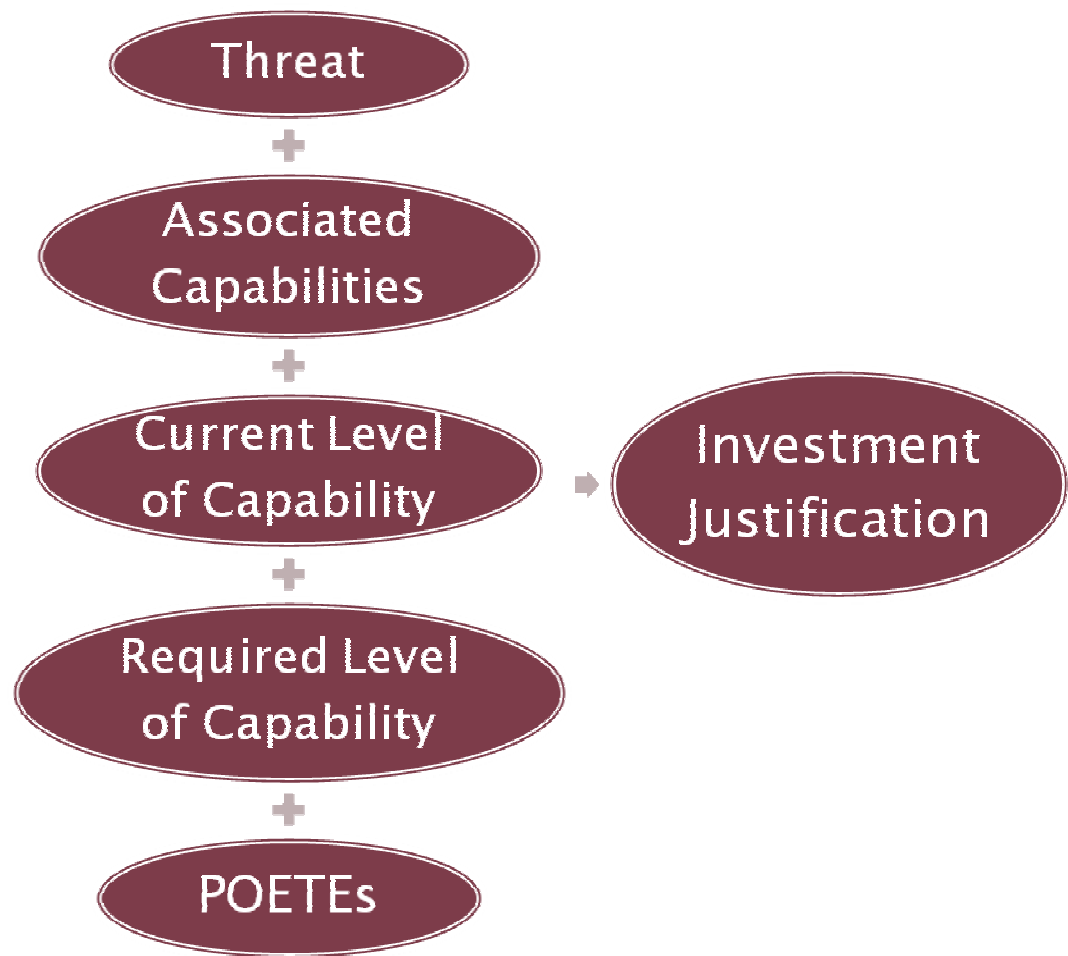
- ▶ What are the threats?
- ▶ What capabilities are associated with those threats?
- ▶ What are your current levels of capability?
- ▶ What are your required levels of capability?
- ▶ How do you close the gaps?

Capabilities-Based Planning Tools

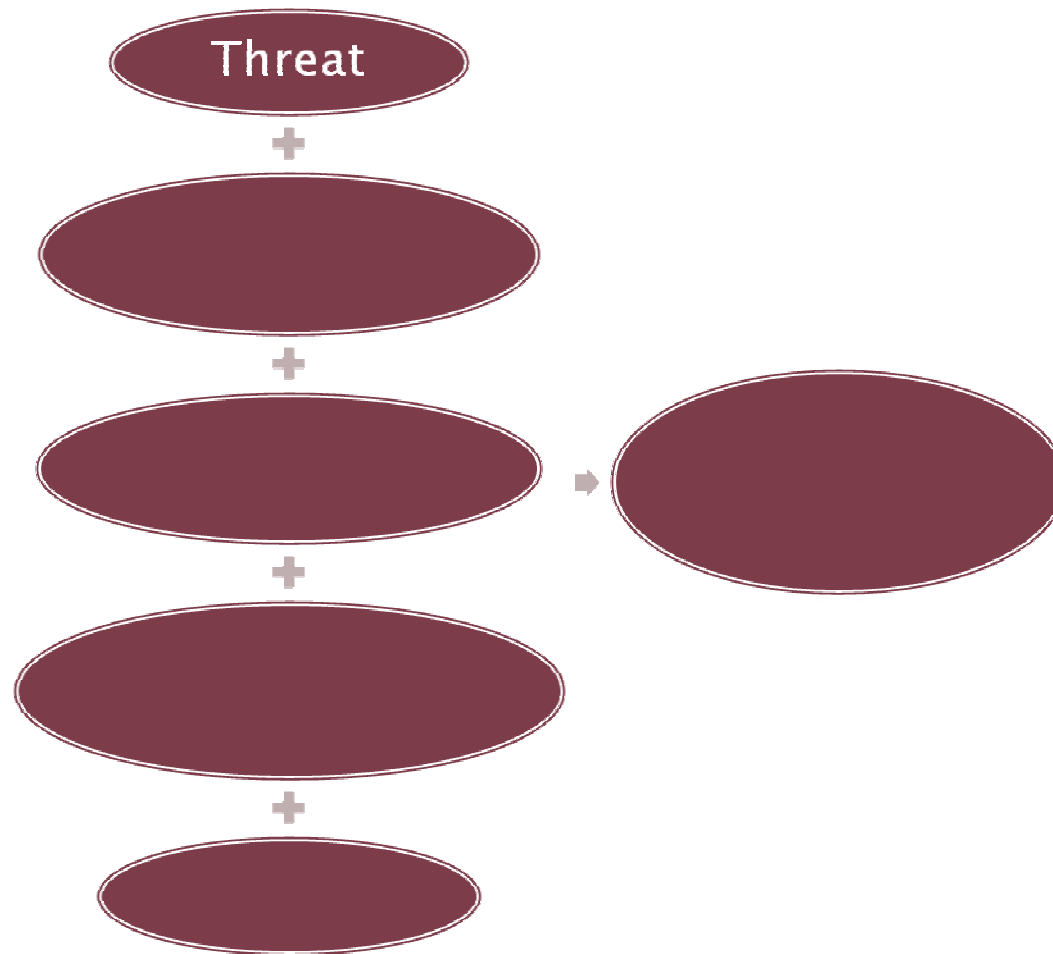
- Threat Assessment Tool
- Risk Assessment Tool
- Capability Assessment Tool
- Capability Assessment Planning Tool



Capabilities-Based Planning Process



Determining Threat



Threat

- ▶ 15 National Planning Scenarios
- ▶ 7 State Planning Scenarios

- ▶ How are they measured?
 - Threat Assessment Tool
 - Probability vs. Consequence
 - How likely are the scenarios to occur and what would the consequences be if they did?

Threat Assessment Tool

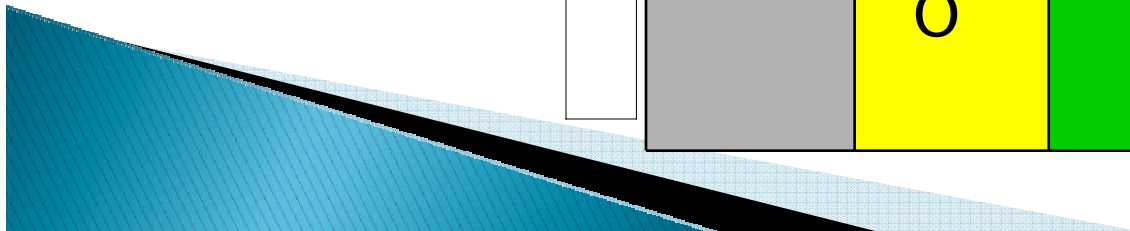
NW Region

Wild land Fire	X
Blizzard	O
Pan Flu	#
IED	@

Threat Level

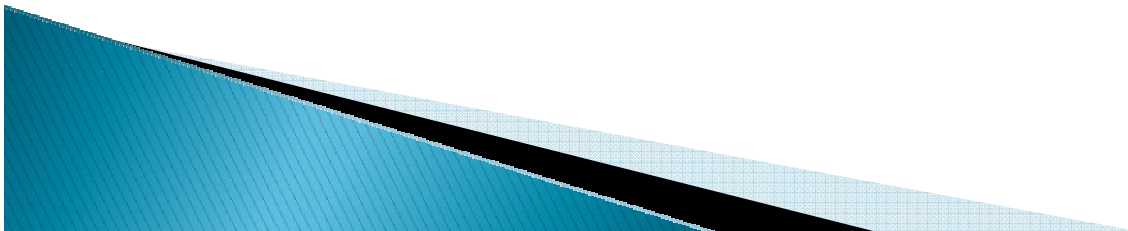
- Extreme/Severe
- High
- Moderate
- Low

		Threat Probability				
		Frequent	Likely	Occasional	Seldom	Unlikely
C o n s e q u e n c e	Catastrophic	X	O	#	@	@
	Critical	X	#	@	@	@
	Limited	X	#	@	@	@
	Negligible	O	@	@	@	@

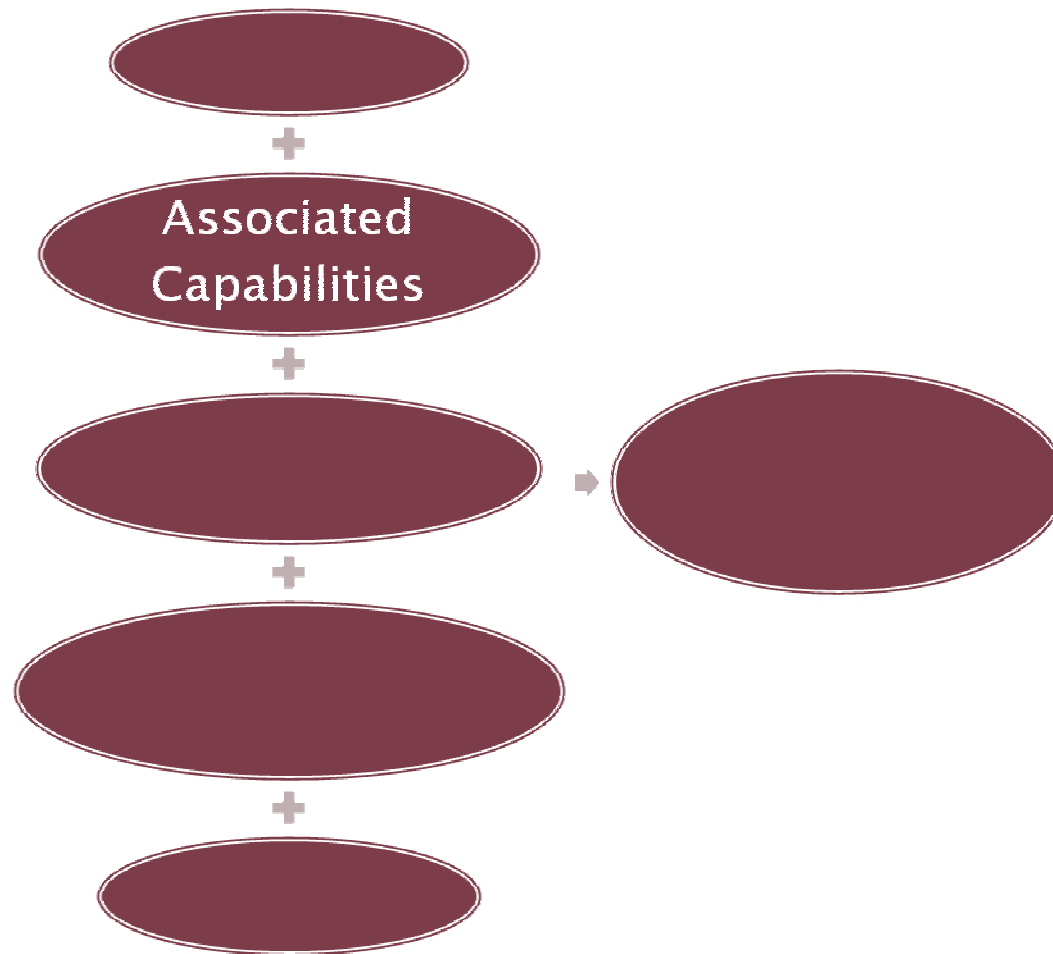


NWAHEMR Planning Scenario Priorities

- ▶ Wildland Fire
- ▶ Blizzard
- ▶ Pandemic Influenza
- ▶ Improvised Explosive Device



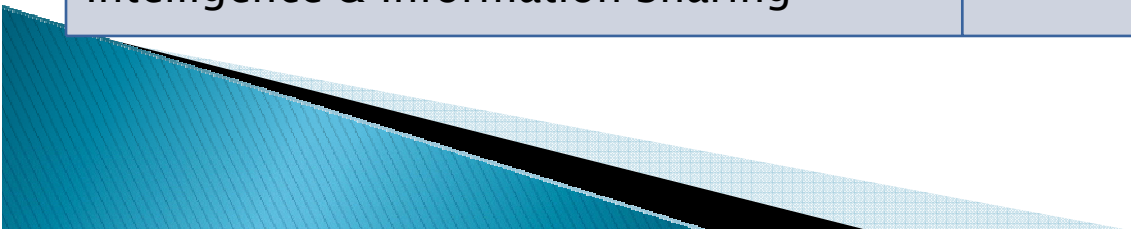
Capabilities-Based Planning Process



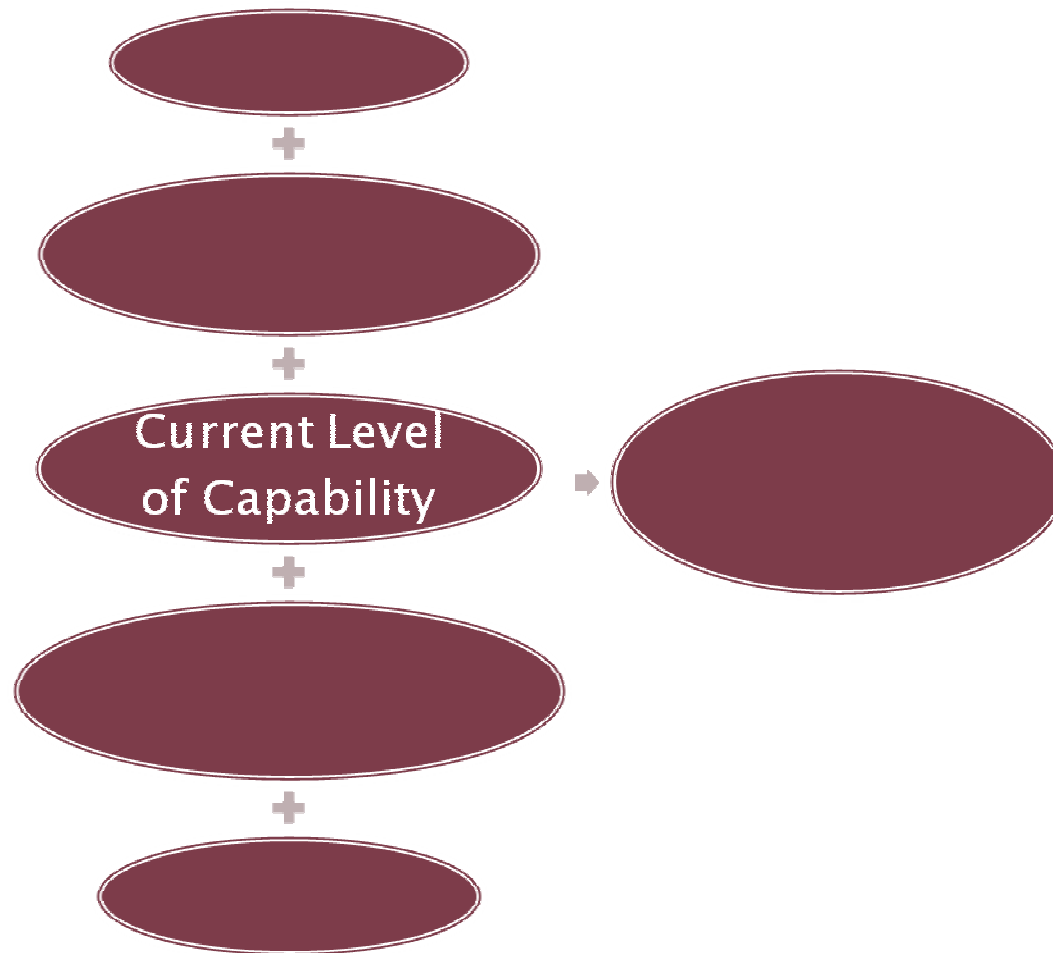
Associated Capabilities

Link capabilities to the threat – to the priority planning scenarios

Planning	WMD/HazMat Response
Communications	Explosive Device Response Operations
Community Preparedness & Participation	Critical Infrastructure Protection
Responder Health & Safety	CBRNE Detection
Emergency Public Info & Warning	Mass Care
Medical Surge	Counter-Terror Investigations & Law Enforcement
Mass Prophylaxis	Citizen Evacuation
Intelligence & Information Sharing	



Capabilities-Based Planning Process



Current Level of Capabilities

Capability Assessment Tool

	REGION																		STATEWIDE	
	NC		NE		NW		S		SC		SE		SLV		SW		W		2008	2009
	08	09	08	09	08	09	08	09	08	09	08	09	08	09	08	09	08	09		
Target Capability																				
Planning	M		M		L		L		M		L		M		M		M		M	M
Communications	M		M		L	M	M		M		M		M		M		M		M	M
Community Preparedness and Participation	L		L		L		L		L		L		L		L		L		L	L
Intelligence/ Information Sharing and Dissemination	M		L	M	L		L	L	M	L		L		M	M	L	L		L	L
Counter-Terror Investigations and Law Enforcement	M	H	M		M		H		M		L		M		M		M		M	M
CBRNE Detection	M		L		L		M		M		L		L		L		L		L	L
Critical Infrastructure Protection (CIP)	M		M		L		L	L	M	L		L		L		L		L	L	L
Responder Safety and Health	M		L		M		L		M		L		L		M		L		L	L
Explosive Device Response Operations	M		M		M		M		M		L		L		M		M		M	M
WMD/Hazardous Materials Response & Decontamination	H		M		M		M		H		M		M		M		M		M	M
Citizen Evacuation and Shelter-In-Place	L		L		L		L		L		L		L		L		L		L	L
Emergency Public Information and Warning	L		L	M	M		M		M		M		L		L		M		M	M
Medical Surge	M		M		L	M	M		M		M		M		M		M		M	M
Mass Prophylaxis	M		M		L	M	H		M		H	M	H	H		M		M		M
Mass Care (Sheltering, Feeding, & Related Services)	L	M	M		L		L		L	M	L		M		L		M		L	L

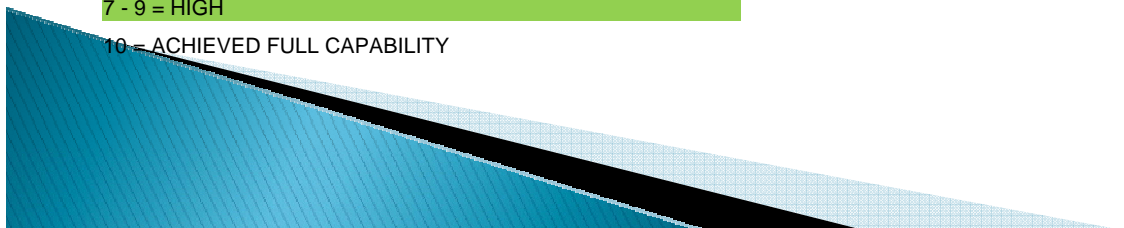
Key:

1 - 3 = LOW

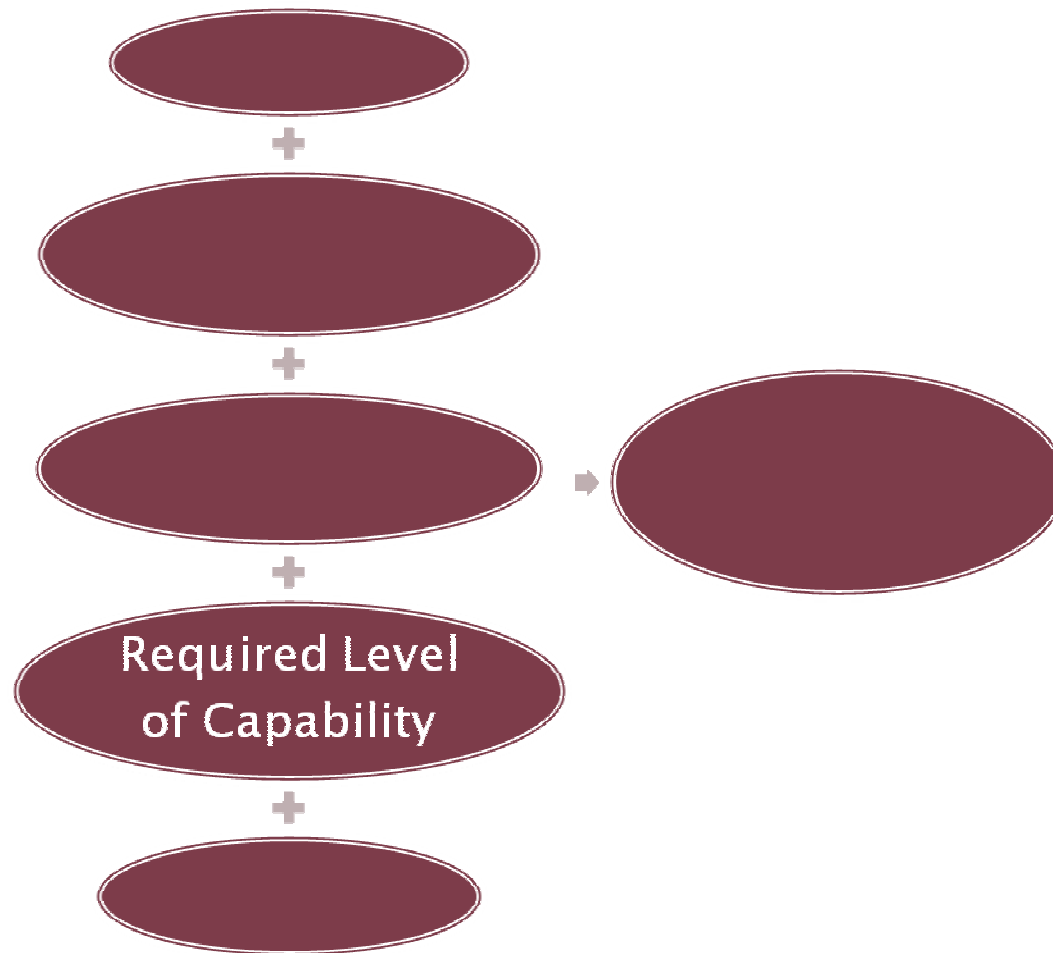
4 - 6 = MED

7 - 9 = HIGH

10 = ACHIEVED FULL CAPABILITY



Capabilities-Based Planning Process

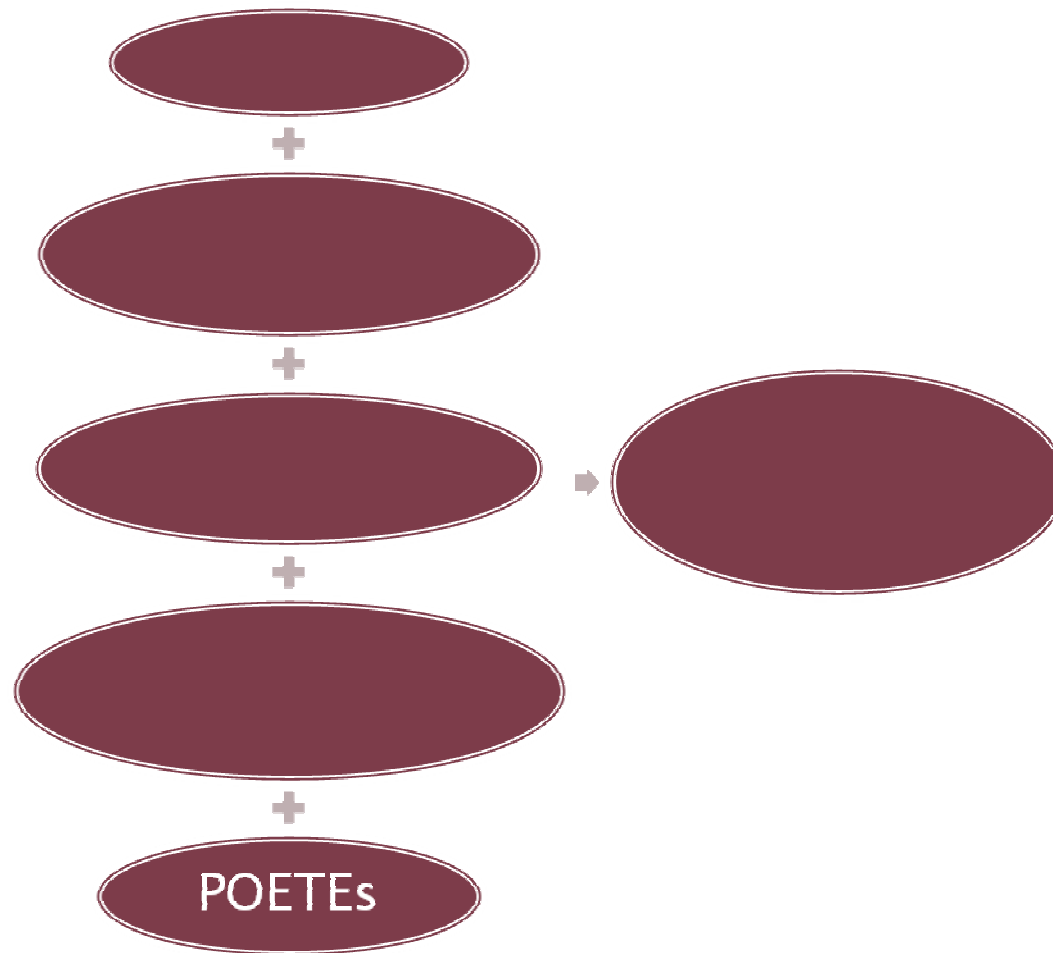


Required Level of Capabilities

▶ Modified Capability Assessment Planning Tool

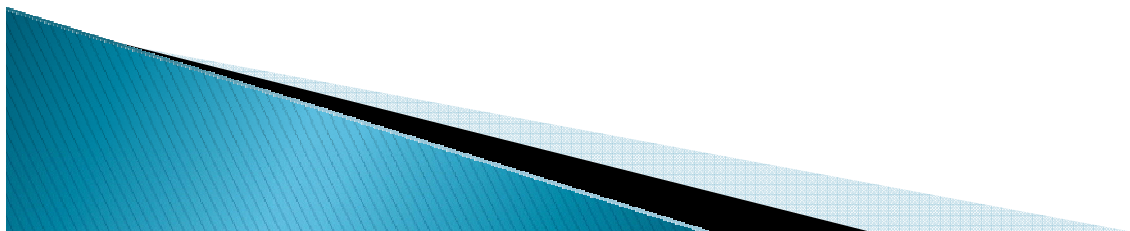
Capability: WMD/Hazardous Materials Response and Decontamination											Scores		Required Level of Capability	2010 Investment Priorities	2011 Investment Priorities		
Measure	0	1	2	3	4	5	6	7	8	9	10	2008				2009	
a	Personnel assigned to HazMat technician responsibilities trained to the HazMat Technician level (in accordance with 1910.120 (q) or NFPA 472).	No effort or system underway nor recognition of need	Some support personnel is limited to operations level training.			N/A					N/A	All personnel assigned to HazMat technician responsibilities trained to the HazMat Technician level (in accordance with 1920.120 (q) or NFPA 472)	2	10	10	N/A	N/A
b	Hazmat has detection capability in following types of meters: A) Flammability (%LEL), O2, CO B) Toxicity (PID) C) Radiation (Detectors, dosimeters, Identifiers) D) CWA's E) Biologicals	No effort or system underway nor recognition of need	Planning is underway to identify detection needs			Planning has been completed; some limited capability exists, through mutual or automatic aid agreements			Capability exists regionally to respond with all identified meters			Capability exists regionally to respond with all identified meters and the capability to immediately deploy them	5	6	9	Increase score from 6 to 8 by purchasing Radiation Detectors	Increase score from 8 to 9 by purchasing Bio Detectors
c	Hazmat has identification capability for the following types of substances: A) Gases and Vapors (GC/MS) B) Liquids C) Solids E) Biologicals (white powders)	No effort or system underway nor recognition of need	Planning is underway to identify needs			Planning has been completed; limited capability exists to identify some listed substances			Capability exists regionally to identify listed substances through mutual or automatic aid agreements			Capability exists regionally to identify listed substances	5	8	8	N/A	N/A
d	HAZMAT personnel can perform weather prediction and hazard pluming.	No effort or system underway nor recognition of need	Recognize need for weather data collection and plume modeling			Some weather and plume modeling capability exists			HazMat personnel can perform weather prediction and hazard pluming with off-site weather data collection and plume modeling			HazMat personnel can perform weather prediction and hazard pluming with on-site weather data collection and plume modeling	5	6	8	Increase score from 6 to 8 by purchasing weather equip	N/A

Capabilities-Based Planning Process

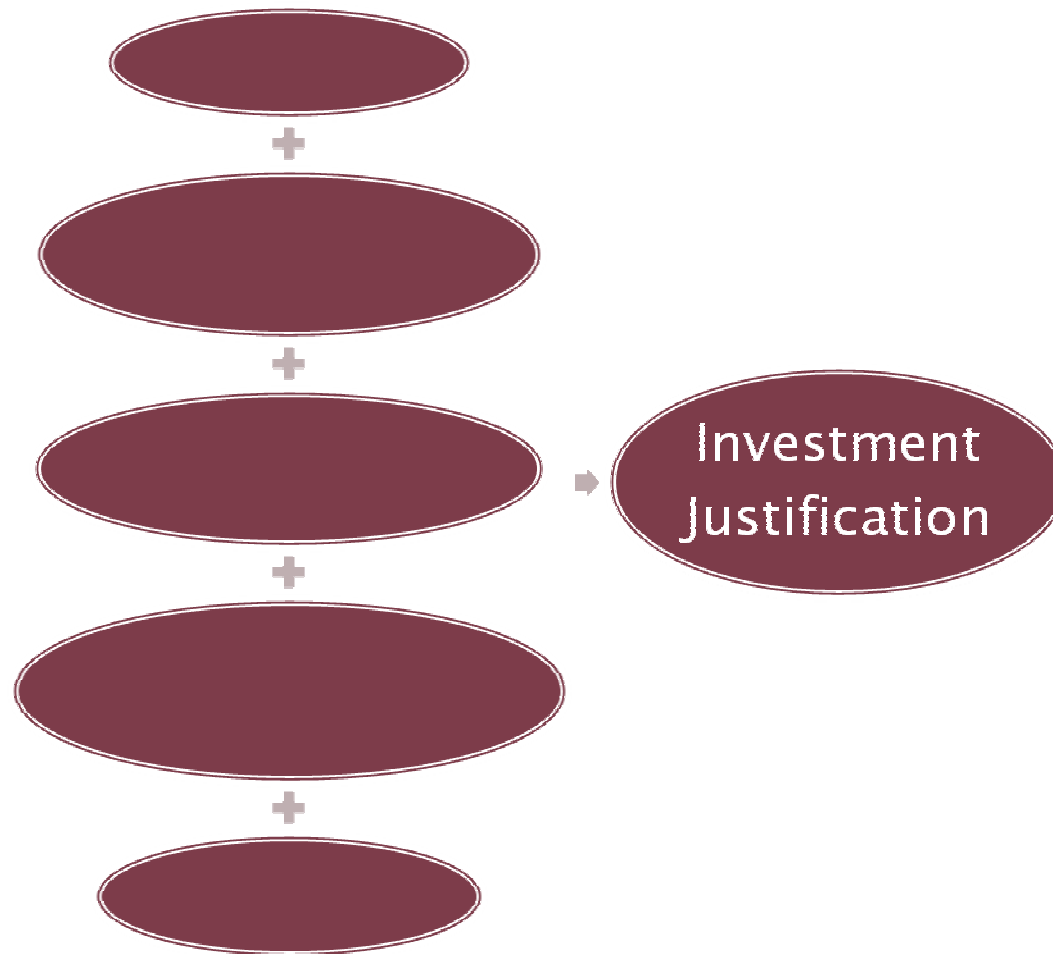


Close the Gaps

- ▶ Prioritize investments based on the level of risk you are willing to accept.
- ▶ Develop POETEs based on threat and capability assessments.
- ▶ Reduce risk by increasing capability.



Capabilities-Based Planning Process

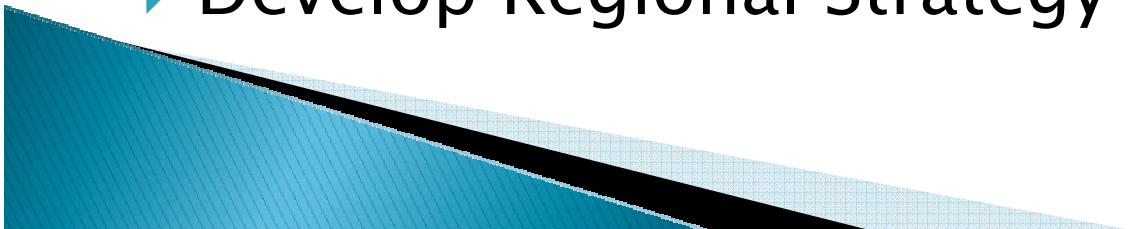


Investment Justification

- ▶ Based on known intelligence, Region X has determined that a Nuclear Detonation – IND is the most probable planning scenario to occur in the region, resulting in the highest level of consequence to the population, infrastructure, and economy. One of the target capabilities associated with this scenario is WMD/HazMat Response and Decontamination. The current level of capability indicates that the region’s ability to detect a hazmat release is a 6 out of 10 (measure b), indicating somewhat limited capability, specifically the lack of access to radiation detectors. The WMD/HazMat Response working group in Region X has determined that the capability for this measure should be a 9 (the capability to respond regionally with the proper detection meters). With the purchase of radiation detectors, the region’s capability measure would increase from a 6 to an 8 in 2010, and would enable the region to have additional capability to respond to an incident with the proper equipment needed to mitigate the threat, minimizing the risk to both population and responders.

Summary

- ▶ Start by assessing threats.
 - Threat Assessment Tool
- ▶ Determine associated capabilities
 - Associated Capabilities
- ▶ Determine the current and required level of capability need to mitigate the threats.
 - Capability Assessment Planning Tool
- ▶ Develop and Prioritize POETEs using information gathered in the assessment tools.
 - Justification for investments
- ▶ Develop Regional Strategy by August 2010



Closing

Questions or Feedback?

mike.wagner@state.co.us

Phone: 720-852-6616